


LA CLE DU CAVEAU



1811.

par Pierre Adolphe Capelle

Saisies de partitions en cours, état au 29 Juillet 2013

Creatives commons 3.0 [by-nc-sa] [http // monviolon.free.fr](http://monviolon.free.fr)

Table des airs

1. À boire ! À boire !	5
2. À dix-sept ans la pauvre Coralie	5
3. La papa	5
4. À Paris et loin de sa mère	6
5. À tort on reproche aux buveurs	6
6. À voyager passant sa vie	7
7. Adieu, donc, dame Françoise	7
8. Adieu, je vous fuis, bois charmant	8
9. Adieu, paniers, vendanges sont faites	8
10. Ah ! Ah ! Monsieur le magister	8
11. Ah ! Cessez, cessez, mon père	9
12. Ah ! De quel souvenir affreux	9
13. Ah ! le bel oiseau, vraiment	10
14. Ah ! Madelon, qu'avez-vous donc ?	10
15. Ah ! Maman, que je l'échappai belle	10
16. Ah ! Monseigneur ! Ah ! Monseigneur <i>ou</i> de la p'tit' poste de Paris	11
17. Ah ! Pour l'amant le plus discret	11
18. Ah ! Quel plaisir d'aimer Lucas	12
19. Ah ! Que je sens d'impatience <i>ou</i> Voyage qui voudra	12
20. Ah ! Que de chagrins dans ma vie !	13
21. Ah ! Quelle gêne, quel tourment	14
22. Ah ! Si j'avais connu Monsieur de Catinat <i>ou</i> Malgré la bataille	14
23. Ah ! S'il est dans votre village	14
24. Ah ! Voilà la vie, la vie suivie	15
25. Ah ! Vous dirai-je, maman	15

4	
46.	Au clair de la Lune 15
228.	Il faut que l'on file, file, file 16
248.	Jamais je n'oublierai 16
296.	Jupiter, prête-moi ta foudre 16
315.	L'amitié vive et pure 17
401.	Non, je ne ferai pas ce qu'on veut que je fasse 17
613.	Va-t'en voir s'ils viennent, Jean 17
648.	Vous qui d'amoureuse aventure 17
658.	Air de Cadet Roussel 18
725.	Des fraises 18
731.	Les Trembleurs d'Isis 18
738.	Carillon Vendôme 19
745.	Ah ! il m'en souviendra, larira 19
747.	Air du Fleuve d'oubli 19
817.	Vaudeville de Sophie 19
257.	Jeanneton prend sa faucille 20
866.	Vaudeville du départ pour Saint-Malo 20

À boire ! À boire !

n°1



À dix-sept ans la pauvre Coralie

n°2



La papa

n°3



À Paris et loin de sa mère

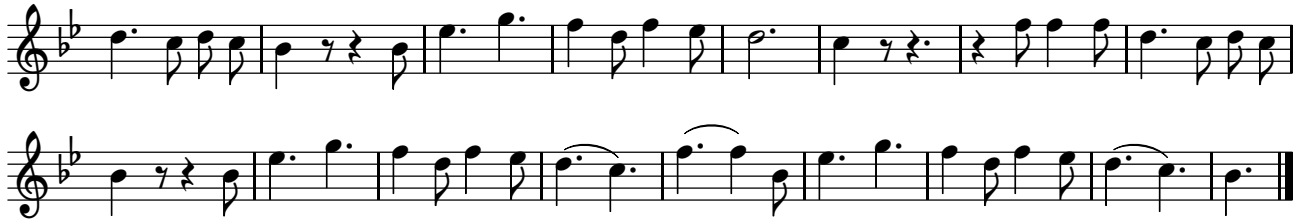
n°4

Musical score for 'À Paris et loin de sa mère', numbered 4. The score is written in treble clef, key of D major (one sharp), and 2/4 time. It consists of four staves of music. The first staff begins with a treble clef, a key signature of one sharp (F#), and a 2/4 time signature. The melody is written on a single staff. The second staff continues the melody. The third staff features a melodic line with a fermata over a dotted quarter note. The fourth staff concludes the piece with a double bar line.

À tort on reproche aux buveurs

n°5

Musical score for 'À tort on reproche aux buveurs', numbered 5. The score is written in treble clef, key of B-flat major (two flats), and 6/8 time. It consists of three staves of music. The first staff begins with a treble clef, a key signature of two flats (B-flat and E-flat), and a 6/8 time signature. The melody is written on a single staff. The second staff continues the melody. The third staff features a melodic line with a fermata over a dotted quarter note.



À voyager passant sa vie

n°6

Four staves of musical notation in G minor (one flat) and 2/4 time signature. The melody is more complex, featuring sixteenth notes, eighth notes, and various rests. It includes phrasing marks and a fermata over the final note.

Adieu, donc, dame Françoise

n°7

One staff of musical notation in G major (one sharp) and 6/8 time signature. The melody is written in a single voice line and ends with a double bar line and the word "Fin".



Adieu, je vous fuis, bois charmant



Adieu, paniers, vendanges sont faites



Ah ! Ah ! Monsieur le magister





Ah ! Cessez, cessez, mon père



Ah ! De quel souvenir affreux



10

Ah ! le bel oiseau, vraiment

n°13



Fin



Ah ! Madelon, qu'avez-vous donc ?

n°14



Ah ! Maman, que je l'échappai belle

n°15



Three staves of musical notation in G major, 4/4 time. The first staff contains the main melody. The second staff begins with the word *Fin* and contains a descending chromatic line. The third staff continues the descending chromatic line and ends with a double bar line and a repeat sign.

Ah ! Monseigneur ! Ah ! Monseigneur *ou* de la p'tit' poste de Paris

n°16

Musical notation for exercise n°16, first staff. It is in G major, 6/8 time, starting with a treble clef and a key signature of one flat. The melody consists of dotted eighth notes and quarter notes.

Musical notation for exercise n°16, second staff. It continues the melody from the first staff, ending with a double bar line.

n°17

Musical notation for exercise n°17, first staff. It is in G major, common time, starting with a treble clef and a key signature of one flat. The melody features eighth notes and quarter notes.

Musical notation for exercise n°17, second staff. It continues the melody from the first staff, ending with a double bar line.

12

Musical score for exercise 12, consisting of two staves in G major. The first staff contains the first six measures, and the second staff contains the remaining six measures. The piece concludes with a double bar line. The notation includes various rhythmic values such as eighth and sixteenth notes, and rests.

Ah ! Quel plaisir d'aimer Lucas

n°18

Musical score for exercise 18, consisting of two staves in 3/2 time. The first staff contains the first six measures, and the second staff contains the remaining six measures. The piece concludes with a double bar line. The notation includes various rhythmic values such as quarter and eighth notes, and rests.

Ah ! Que je sens d'impatience *ou* Voyage qui voudra

n°19

Musical score for exercise 19, consisting of three staves in 6/8 time. The first staff contains the first six measures, the second staff contains the next six measures, and the third staff contains the final six measures. The piece concludes with a double bar line. The notation includes various rhythmic values such as quarter and eighth notes, and rests.

Three staves of musical notation in G major (one sharp) and 4/4 time. The first staff features a melodic line starting with a half note G, followed by a quarter note A, and then a series of eighth notes. The second staff contains a bass line with quarter notes and eighth notes. The third staff continues the bass line and concludes with a double bar line.

Ah ! Que de chagrins dans ma vie !

n°20

Four staves of musical notation in B-flat major (two flats) and 2/2 time. The first staff is labeled "n°20" and shows a melodic line starting with a half note B-flat, followed by a series of quarter notes. The second, third, and fourth staves continue the melodic line with various rhythmic patterns, including eighth and sixteenth notes, and end with a double bar line.

Ah ! Quelle gêne, quel tourment

n°21

Ah ! Si j'avais connu Monsieur de Catinat *ou* Malgré la bataille

n°22

Ah ! S'il est dans votre village

n°23

Two staves of music in G major, 2/4 time. The first staff features a complex rhythmic pattern with many sixteenth notes and a triplet of eighth notes. The second staff continues the melody with a triplet of eighth notes.

Ah ! Voilà la vie, la vie suivie

n°24

Two staves of music in B-flat major, 2/2 time. The first staff shows a simple melody with quarter and half notes. The second staff continues the melody with a similar rhythmic structure.

Ah ! Vous dirai-je, maman

n°25

One staff of music in G major, 2/2 time. The piece starts with a treble clef, a key signature of one sharp, and a 2/2 time signature. It features a simple melody with quarter and half notes, ending with a double bar line and repeat signs.

Au clair de la Lune

n°46

Two staves of music in G major, 3/4 time. The first staff shows a simple melody with quarter and half notes. The second staff continues the melody with a similar rhythmic structure.

Il faut que l'on file, file, file

n°228

Three staves of musical notation in 2/2 time. The first staff begins with a treble clef and a key signature of one sharp (F#). The melody consists of eighth and quarter notes, with a repeat sign after the first four measures. The second and third staves continue the melody with similar rhythmic patterns, ending with a double bar line.

Jamais je n'oublierai

n°248

Two staves of musical notation in 6/8 time. The first staff begins with a treble clef and a key signature of one sharp (F#). The melody is primarily composed of quarter and eighth notes, with a repeat sign after the first four measures. The second staff continues the melody, ending with a double bar line.

Jupiter, prête-moi ta foudre

n°296

Two staves of musical notation in 2/2 time. The first staff begins with a treble clef and a key signature of two sharps (F# and C#). The melody features quarter and eighth notes, with a repeat sign after the first four measures. The second staff continues the melody, ending with a double bar line.

L'amitié vive et pure

n°315

Non, je ne ferai pas ce qu'on veut que je fasse

n°401

Va-t'en voir s'ils viennent, Jean

n°613

Vous qui d'amoureuse aventure

n°648



Air de Cadet Roussel



Des fraises



Les Trembleurs d'Isis



Carillon Vendôme



Ah ! il m'en souviendra, larira



Air du Fleuve d'oubli



Vaudeville de Sophie





Jeanneton prend sa faucille



Vaudeville du départ pour Saint-Malo

